

FROM: THE NORTH SHORE RADIO CLUB INC.,  
Box 171, Oshawa, L1H 7L1.

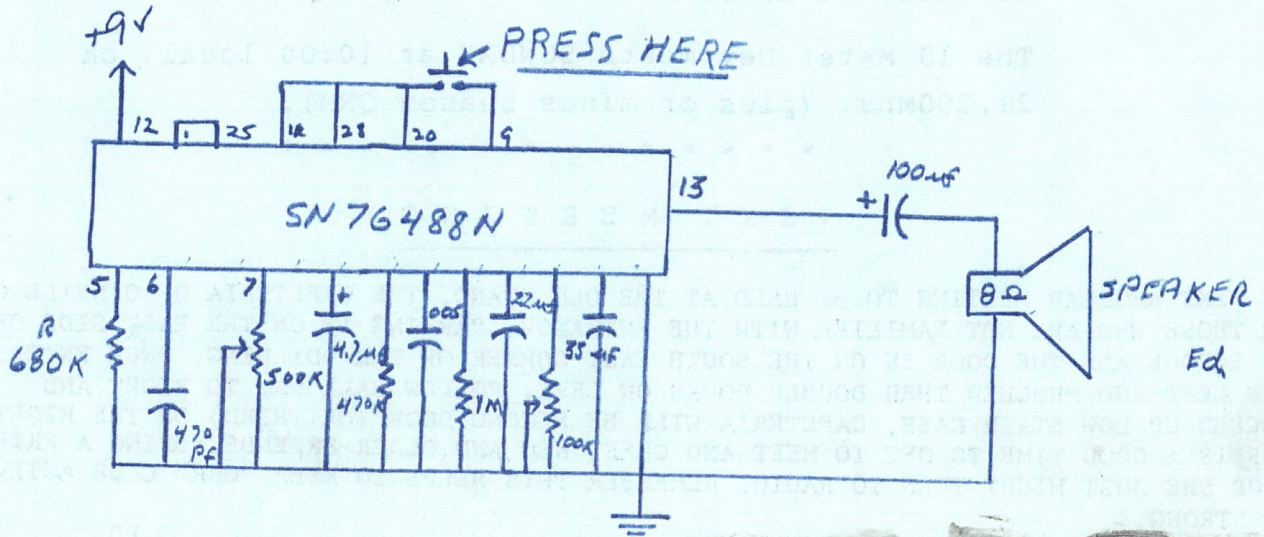


JUNE / 82

TO:

VE3CRK  
DAY, Ralph  
454 Holcan Ave.  
OSHAWA, Ontario  
L1G 5X6

# BOMB DROP C/W EXPLOSION





" S P A R K S "

THE NORTH SHORE AMATEUR RADIO CLUB INC.

JUNE 1982 EDITION

OFFICERS & EXECUTIVE

Directors	Colin Bell	VE3CEU	723-7842
	Bob Elston	VE3LLE	725-5124
	Bob Leet	VE3LLZ	725-1236
	Mac McFarlane	VE3IKG	723-8484
	Hank Verwoerd	VE3FHV	571-0863
President	Bob Elston	VE3LLE	725-5124
Vice-Pres.	Mac McFarlane	VE3IKG	723-8484
Treasurer	Hank Verwoerd	VE3FHV	571-0863
Secretary	Colin Bell	VE3CEU	723-7842
Registrar	John Pluister	VE3FGL	655-4269
Get-Well-Cards	Ted Brant	VE3ADD	668-3561
Editor	Doug Smith	VE3MKC	705-786-2086
Tech Editor	Phil Leith	VE3LNE	728-8167

+ + + + + + + + + + + + + + + +

Club Repeater: VE3OSH 147.72 In.  
147.12 Out.

Club Station: VE3NSR

NETS:- The 2 Meter Net meets every THURSDAY on the club repeater at 19:30 local, with Roy VE3AAF at control.

The 10 Meter Net meets SUNDAY at 10:00 local, on 28.200Mhz. (plus or minus beacon QRM).

\* \* \* \* \*

N E X T M E E T I N G

THE NEXT REGULAR MEETING TO BE HELD AT THE OLD STAND, THE CAFETERIA OF O'NEILL C.I. FOR THOSE WHO ARE NOT FAMILIER WITH THE ENTRANCE, PARKING IS ON THE EAST SIDE OF THE SCHOOL AND THE DOOR IN ON THE SOUTH EAST CORNER OF THE BUILDING. ONCE ENTERED, TURN LEFT AND PROCEED THRU DOUBLE DOORS ON LEFT. FOLLOW HALL WAY TO RIGHT AND PROCEED UP LOW STAIR CASE, CAFETERIA WILL BE SECOND DOOR (OR THIRD) ON THE RIGHT. THIS IS A GOOD TIME TO GET TO MEET AND GREET NEW AND OLDER FRIENDS. BRING A FRIEND, HE OR SHE JUST MIGHT TURN TO RADIO. REMEMBER THIS HELPS TO KEEP "OUR" CLUB ACTIVE AND STRONG.

ED.



"SPARKS"

NEWS AND VIEWS  
\*\*\*\*\*

WELL!!!... NOT A SINGLE WORD FROM ANY BODY, ABOUT CLUB ACTIVITIES OR WHAT THE MEMBERS AS A WHOLE OR INDIVIDUALLY ARE DOING. THIS IS SUPPOSED TO BE A CLUB BULLETIN NOT THE EDITORS. FOR THOSE WHO TOOK THE TIME AND EFFORT IN PAST ISSUES LET ME THANK YOU AGAIN AS I MORE THAN EVER APPRECIATE THE CONTRIBUTIONS.

ED.

\*\*\*\*\*

I DO HAVE SOME INFORMATION THAT DID NOT MAKE THE LAST ISSUE AND THAT IS THE PEOPLE THAT ACTIVELY SUPPORT THE REAPEATER. THE FOLLOWING IS A LIST OF "OSH" DONATIONS RECEIVED FROM AUGUST 1981 TO APRIL 1982.

VE3AAF --- VE3ADJ --- VE3ADV --- VE3APW --- VE3ATT --- VE3AWC --- VE3BAB --- VE3BGZ ---  
VE3CEU --- VE3DJO --- VE3DYE --- VE3EIS --- VE3FAT --- VE3FTA --- VE3HAB --- VE3IND ---  
VE3JNU --- VE3KZJ --- VE3KZL --- VE3LEW --- VE3LIZ --- VE3LLE --- VE3LNE --- VE3LNX ---  
VE3MCO --- VE3MEU --- VE3MLW --- VE3RO --- ANON.

\*\*\*\*\*

FIELDAY IS FAST APPROACHING AND EVAN IS ON THE LOOKOUT FOR ANYONE THAT COULD GIVE A HAND. JUST NAME THE TIME YOU COULD BE AVAILABLE AND LET EVIN SCHEDULE THE WORK LOAD. I KNOW FIELD DAY IS LOTS OF FUN AND I'VE SEEN PEOPLE MEET LOTS OF OLD FRIENDS THERE IN JUST AN HOUR OR SO. SO WHY NOT COME OUT JUST TO LOOK AROUND? CONTACT EVIN VE3IND.

\*

\*\*\*\*\*

JUST ARRIVED....SO HERE IS THE LATEST FROM EVAN.

WELL HERE WE ARE ...THE LAST BULLETINBEFORE FIELD DAY--SEEMS LIKE ONLY A SHORT FEW DAYS SINCE WE WERE UP TO OUR "GROUND PLANES IN SNOW".

THIS YEARS PREPERATIONS ARE GOING MUCH BETTER, (THE FIELD DAY MANAGER HAS A SLIGHT IDEA OF WHAT TO DO????)THAN LAST YEAR, BUT NOT WITHOUT BUMPS.

THRU NO FAULT OF THERS, DAVE'S (VE3LEW) FAMILY CAN NOT HAVE US UNTIL JULY(A LITTLE TO LATE). THERE ARE SEVERAL VERY GOOD LOCATIONS IN THE WORKS, SUCH AS HEBER DOWNS, DURHAM COLLEGE AND THE ONTARIO REGIMENT TRAINING AREA. BY THE TIME YOU ARE READING THIS IT WILL HAVE BEEN SETTELED BUT NOT SOON ENOUGH FOR THIS EDITION. OTHER WISE THINGS ARE PROGRESSING NICELY.

A VERY SPECIAL VOTE OF THANKS GOES TO Tom Rogers WHO WILL ONCE MORE PROVIDE OUR ELECTRICAL POWER. INCIDENTALLY, HF IS AS BUSY AS L, SO NEEDS A LITTLE HELP IN GETTING HIS TICKET. HOW ABOUT A COUPLE OF VOLINTEER TUTORS. CONTACT EVAN OR TOM.

AGAIN , THIS YEAR , THE FIRST PRIORITY IS TO HAVE FUN AND ENJOY OURSELVES. WE HAVE THREE TENT MANAGERS AND ELEVEN OPERATORS CONFIRMED AND A NUMBER OF POSSIBLES. ONE OF THE HOPES IS TO HAVE A TENT STAFFED BY "YL'S" WITH THE NESSARY GUARDS PROVIDED. (BOYS O BOYS EVAN YOU DO LIKE TO HAVE FUN !!!)

WE NEED PEOPLE FOR FRIDAY EVE. JUNE 25th TO SET UP THE TOWERS ETC. IT WOULD BE VERY NICE TO HAVE SOME ONE CO-ORDINATE ALL THE TRANSPORTATION AND SOMEONE ELSE TO TAKE CHARGE OF THE ASSEMBLY AND REMOVAL----MANY HANDS MAKE LIGHT WORK.

BY THE END OF THE NEXT CLUB MEETING WE HOPE TO HAVE ALL THE HOLES PLUGGED.

BE SURE TO COME TO THE NEXT, DAVE (VE3GUD) IS LOOKING FORWARD TO SHOWING HIS "VTR" FEATURE OF LAST YEARS FIELDAY. IT IS GREAT --- I HAD A SNEAK PREVIEW . ANY ONE ELSE WITH FILM OR PICTURES, LET US KNOW , IT IS ALL WELCOME. SEE YOU AT THE MEETING AND LETS ALL PUT IN A GOOD WORD FOR THE SAME WEATHER AS LAST YEAR.

73 FROM EVAN VE3IND

\*

\*\*\*\*\*



"SPARKS"

NEWS AND VIEWS

THANKS TO EVAN VE3IND I HAVE SOME UP TO DATE EMERGENCY TELEPHONE NUMBERS.

ONTARIO PROVINCIAL POLICE  
ZENITH 50,000

|             |              |               |
|-------------|--------------|---------------|
| HIGHWAY 401 | *BELLEVILLE  | (613)968/6495 |
|             | COBURG       | (416)372/5421 |
|             | NEWCASTLE    | (416)987/4060 |
|             | WHITBY       | (416)668/3388 |
|             | *DOWNSVIEW   | (416)248/3151 |
|             | MILTON       | (416)878/2307 |
| QEW         | PORT CREDIT  | (416)278/6131 |
|             | BURLINGTON   | (416)681/2511 |
| HWY 28/115  | PETERBOROUGH | (705)742/0401 |
| HYW 12/48   | BEVERTON     | (705)426/7366 |
| HYW 400/11  | OAKRIDGES    | (416)773/5281 |
|             | BRADFORD     | (416)775/3326 |
| HYW 10      | SNELGROVE    | (416)846/5644 |

\* DISTRICT HEADQUARTERS

THANKS EVAN

Ed.

\*\*\*\*\*

GUESTS AT THE LAST MEETING WERE AL LOWRY VE3AL AND MARTIN HOLMES VE3 --(UNK)

\*\*\*\*\*

NEW MEMBERS TO JOIN OUR RANKS DAVE ANDREWS AND IN THE FALL I WILL TRY TO UP DATE THE MEMBERSHIP. SO DONT MISS THE SEPTEMBER ISSUE.

\*\*\*\*\*

THANKS GO TO LORNE DORREEN VE3JV FOR BRINGING HIS MOVIES ON LAKEVIEW PARK 1946 AND EVEN MORE SPECTACULAR WAS THE AIR SHOW IN NORTH BAY, THE YEAR BEING 1950

\*\*\*\*\*

DON'T FORGET --- "SERMON ON THE MOUNT" COMES ABOUT IN JULY.

\*\*\*\*\*

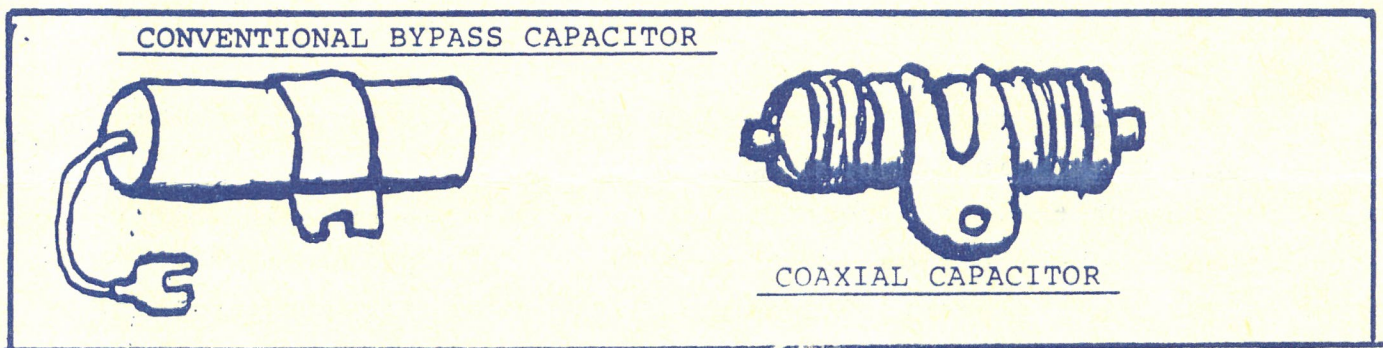


HELPFUL---HINTS.

PART TWO.

CAPACITORS. A capacitor will in effect, pass alternating current but block the flow of direct current (D.C.). Since interference is an alternating or impulse signal, a capacitor will by-pass most of it to ground without affecting the direct current circuit. Conventional by-pass capacitors are satisfactory for broadcast-band (A.M.) suppression but they are not very effective at higher frequencies.

Communications frequencies up to the U H F range require the use of a COAXIAL CAPACITOR



GROUNDING. A good solid ground helps to keep the R F I interference generated by the ignition and charging systems from traveling throughout the vehicle. Grounding also reduces inter-coupling and prevents re-radiation. Grounding minimizes R F I radiation from the vehicle by connecting the metal parts together to form an effective Shield.

Vehicle wiring must be carefully routed to avoid transfer of interference from one circuit to another, particularly from the high voltage ignition cables.

The use of High Voltage Suppressors will be discussed in detail later on in Issues to come.

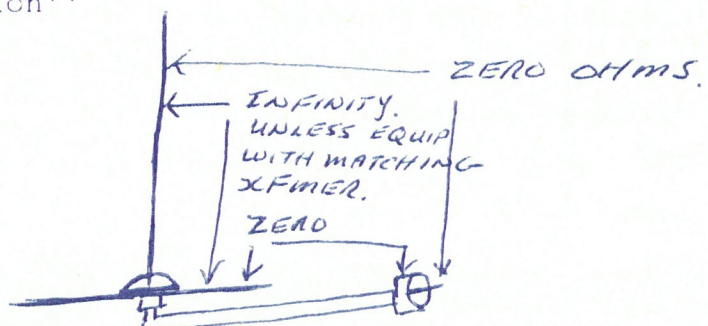


O K SPARKYS-----Here goes the test of OLD MURPHY'S LAW?

When installing your rig in the mobile the following CHECKS should be performed.

- 1(a) Check to see if all suppression components specified by the vehicle manufacturer are still in place.
  - (b) Check to see that the resistor cables have not been replaced with non-resistor types.
  - (c) Check all ground straps and make sure that they are not corroded or loose.
  - (d) Check to see if there are no missing tooth-type lockwashers; broken resistor cables; corroded grounds or cracked Dis. Cap and Rotor.
- 2 If the Engine has not been tuned recently have it done; replacing; spark plugs; breaker points and condenser (if so equipped). Replace also the Rotor and check to see that the Cap and Wires are in good shape.  
The Engine must be in top operating condition to guarantee optimum radio performance
- 3 Connect the rig directly to the battery. DO NOT tap into the accessory-ignition switch; because intercoupling between the Vehicle's electrical system and the Rig's circuit may cause interference.
- 4 Route low voltage wires away from the ignition system. Keep all suspected circuits separated where possible; secure your lead in wires neatly with hold down ties or clips.
- 5 Make certain the antenna lead in shield is grounded at both ends.  
Insulation should be inspected and all connections must be cleaned and tightly secured.

Here are three OHMMETER checks that should be made on an antenna after installation''



COMPLIMENTS TO  
SPARC



## 'SPRUCE GOOSE' MOVE AIDED BY HAMS

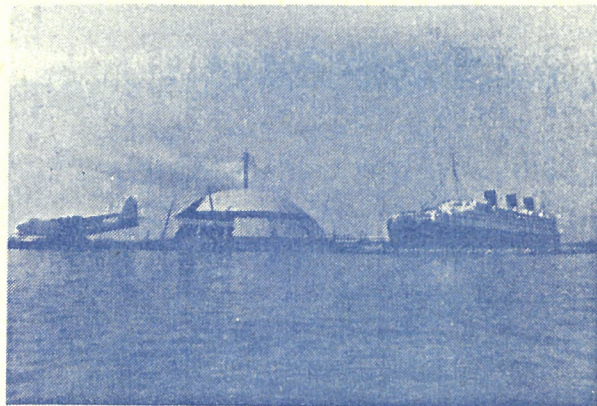
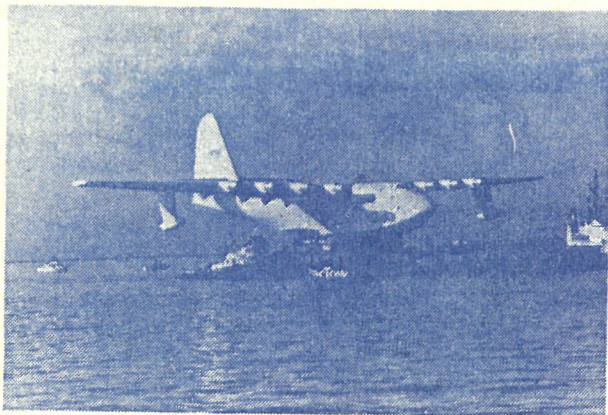
All around the country, newspapers and television news programs carried the word that the giant Howard Hughes aircraft, nicknamed the 'Spruce Goose' had been moved to her final exhibit site last February 10 and 11. However, few also carried the word that the move had been guarded by a fleet of 28 pleasure craft, and largely coordinated by 40 amateur radio operators, all members of ARRL, and many also members of 10-10.

All vessels were under the control of Jim Michaels, W6PGM, Commander, Long Beach Power Squadron. Jim also acted as net control officer for the hams stationed on board the small craft, and at key points ashore.

Examination of a map shows that the course to be patrolled was not a direct one, as might have been concluded from news reports, but one that was somewhat circuitous, in that it was necessary to proceed around a substantial land area in order to get from the point of origin to the Goose's final destination, a newly fabricated dome-type structure just astern of the Queen Mary. All told, the move was for a distance just a bit greater than four miles.

For obvious reasons, it was impractical to use 10 meters for the kind of communication required by the closely coordinated move, so the hams involved supplied their own two meter equipment. All of the small craft were identified by highly visible banners and managed to keep the course free of observers who might cause problems. In their communications, care was taken to avoid any possible interference with other services, so the marine frequencies were as much out of bounds as was 10, because of the possibility of transmissions conflicting with those of port pilots, harbor patrol craft, and others.

In addition to W6PGM, 10-10 members who participated were N6BCY, Rosemarie Pitz, 10-10 No. 25606, James Hoff, KE6EF, No. 3949, K6GRS, "Brownie" Brown, No. 31675, Alan Halberg, K6PQX, No. 33705, and AK6Y, Ron Boan, No. 17305.



In the left photograph, the giant aircraft may be seen in its cradle. Notice how it dwarfs the tug just below it. Some of the escort pleasure craft may be seen behind the Spruce Goose.

In the right photograph, the great flying boat approaches the dome in which it will be permanently housed and on exhibit. At the far right is the Queen Mary, home of W6RO, 10-10 No. 25,000.



SELL BUY SWAP

\*\*\*\*\*

\*\*\*\*\*

\*\*\*\*\*

\*\*\*\*\*

\*\*\*\*\*

FOR SALE: COPE 1030 TERMINAL USED CURRENTLY AS PRINTER FOR AN "EXIDY SORCERER" MPU  
INTERFACE IS PARALLEL. COMPS WITH 6 (SIX) IBM GOLF BALL TYPE ELEMENTS.

COPE 1030 TERMINAL USED WITH RADIO SHACK MODEL I MPU. SERIAL INTERFACE.  
NEEDS MINOR REPAIR. C/W 2 GOLF BALL TYPE ELEMENTS.

CONTACT ALFRED BENDEL. 416/576/4839.

\*\*\*\*\*

FOR SALE: MODEL 15 TELETYPE C/W DEMODULATOR. ALSO G.E. 2 METER PROG. LINE C/W OSH, RPT, AND  
147.520 XTALS. CONTACT RANDY, VE3MUR, 416/576/4577

\*\*\*\*\*

FOR SALE: TRI-BAND TRANSCEIVER. EICO 735. EXCELLENT FIRST RIG. 100 WATT OUT ON 80/40/20M.  
THIS ONE DOES NOT DRIFT. MAKE OFFER TO JACK AT 416/725/9464.

\*\*\*\*\*

FOR SALE: YAESU 207R, C/W DC & AC CHARGER, BATTERIES ETC. \$450.00. ALSO MOTOROLA HT 220S  
(2) @ 250.00 EACH CONTACT PHILL AT 416/655/4069.

\*\*\*\*\*

WANTED: SHARP CW XTAL FILTER, AUDIO FILTER, OR "Q" MULTIPLIER TYPE, TO BE USED WITH  
HEATH COMANCHP. CALL BERNARD FERRIS AT 416/668/6177.

\*\*\*\*\*

WANTED: EXTERNAL VFO, TUNING 6 thru 8 Mhz. CALL MOE AT 705/277/2984.

\*\*\*\*\*

WANTED: TELETYPE MACHINES. ANY TYPE OR MODEL. SET YOUR PRICE AND CALL ME.  
PHIL AT 416/655/4069.

\*\*\*\*\*

FOR SALE: DUMMY-LOADS. QUART SIZE, FOR UP TO 200 BIG WATTS. THESE UNITS ARE FILLED WITH SPECIAL  
OIL AND CAN BE HAD FOR ONLY 18.00 OR IF YOU GO WITH A FRIEND 2 FOR 30.00 DOLLARS  
CALL MAC AT 416/723/8484

\*\*\*\*\*

WANTED: 3 ELEMENT 10 OR 11 METER BEAM IN REASONABLE REPAIR.  
CALL GARY VE3EPY AT hm. 416/723/1210 or bz. 416/683/8200 /220

\*\*\*\*\*

WANTED: HALLICRAFTERS MODEL HA-16 VOX CONTROL UNIT WORKING OR NOT EVEN JUST THE SHELL  
CALL DOUG COLLECT AT 705/786/2086.

FOR SALE: CB 5/8 WAVE SEAMLESS ALUM. ANT. VERTICLE. RATED FOR 100 mph. GAMMA MATCHED  
DOUPLING D.C. GROUNDED. USED ALL WINTER ON 10 METERS. CHANGING TO BEAM.  
CALL DOUG VE3MKC PR. 30.00

TAYLOR 5/8 WAVE SEAMLESS AIRCRAFT ALUM. 100 mph. WIND RATED. LOADING COIL MATCHED  
CAN BE USED ON 10 METERS. CALL DOUG VE3MKC

PR. 30.00

WANTED: 60 ft. OF RG/8U OR HELIAXE CABLE FOR USE ON 144 mhz. URGENT.

CALL DOUG 705/786/2086.

THIS SPACE IS NOW AVAILABLE DUE TO  
CRAMMING

VE3MKC.

ALSO IF ANY OF THE ABOVE ITEMS ARE  
NO LONGER AVAILABLE WOULD YOU PLEASE  
INFORM ME.

ED.

\*\*\*\*\*

FOR SALE: I COM 230 HANDY TALKY SYNTHESIZED 2M RIG 146 TO 148 MHZ. 10 WATTS OUTPUT  
WITH MIC. FOR INFO CALL LES DONN 662/8783



N.S.A.R.C. INC. BUDGET FOR THE YEAR 1982

INCOME

|                         |             |
|-------------------------|-------------|
| REGISTRATIONS           | \$ 1,200.00 |
| SALE OF CRESTS (10 x 2) | 20.00       |
| COFFEE MONEY            | 50.00       |
| RAFFLE PROCEEDS         | 100.00      |
| DONATIONS               | 225.00      |
| PROCEEDS AMATEUR MARKET | 725.00      |
| INTEREST EARNED         | 25.00       |
|                         | <hr/>       |
| TOTAL INCOME            | \$ 2,345.00 |
|                         | <hr/> <hr/> |

EXPENDITURES

|                                             |             |
|---------------------------------------------|-------------|
| POSTAL BOX RENTAL                           | \$ 17.00    |
| BULLETIN (POSTAGE, STATIONARY,<br>PRINTING) | 1,000.00    |
| RADIO LICENCES NSR & OSH                    | 26.00       |
| INSURANCE                                   | 135.00      |
| FIELD DAY                                   | 150.00      |
| CORN ROAST                                  | 75.00       |
| DECEMBER WINE & CHEESE PARTY                | 175.00      |
| VE30SH (RENT & UPKEEP)                      | 350.00      |
| AMATEUR MARKET                              | 200.00      |
|                                             | <hr/>       |
| TOTAL EXPENDITURES                          | \$ 2,128.00 |
|                                             | <hr/> <hr/> |



of the Relay. ROUTE. PARPH'S  
THIS IS A SHORT THAT ESPECIALLY SCOUTS  
TO LET A ROAD NEEDED, DOWN. SCOUTS  
EXPERTISE UP A HERB ER  
FOR SET. UP 88'S  
AREA.



*June 1982*

S U M M E R A C T I V I T I E S

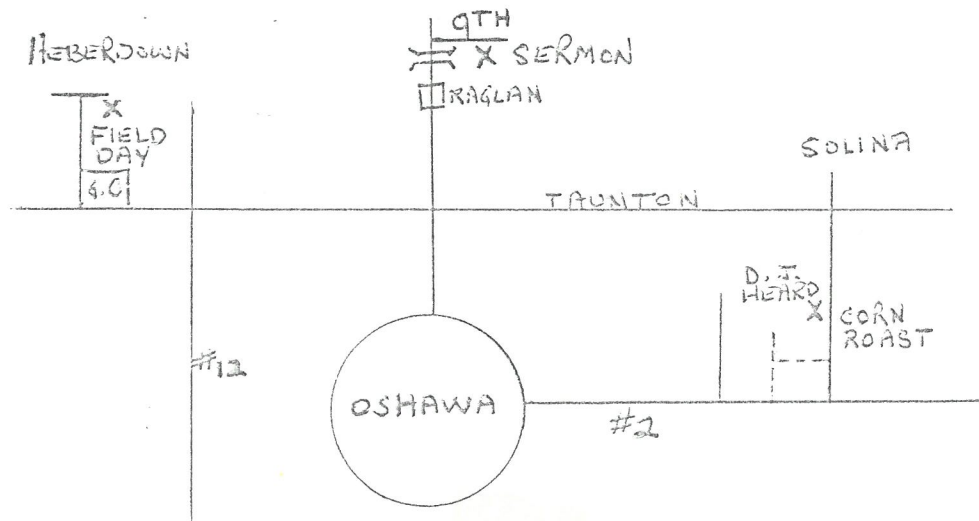
FIELD DAY:- Held as usual on the last full weekend of June. i.e. June 25/26/27. It will be held this year at a new site. "HEBERDOWN CONSERVATION AREA is the place. To get there proceed west on Taunton Rd. from #12 Hwy. to the west boundary of Country Lane Golf Club. Make a right turn (north) and go up that road till you get to a STOP sign; make a right (east) turn and about two hundred yards you will find a gate with our sign. There should be someone manning the gate but if not the padlock will be open, open the gate and pass on through (making sure the chain and padlock are replaced just as you found them). Head to the right and you will be there. Come on out, operate, log, mingle, or carouse but be there. Friday evening is "erect the Towers night" and we need all the help we can get, so don't be shy.

SERMON on the MOUNT:- Will be held Tue. 13th July at 1900 till ??? This is our annual get-together at good ol' "OSH". The location for the few who don't know where this efficient machine is located, is the Oshawa Skeet Club. To find it go north on Simcoe St. past Raglan and under the railroad underpass. At the top of this long hill you will see a conservation sign (possibly one of ours as well) This is the 9th Line. Make a right turn and you should see our tower. Proceed along this road approx. one mile and you will see the layout just south of the road. It's a fun night for all. Come on out and find out what all those 2 Meter voices look like. (NOTE) From past experience, bring along a sweater or jacket cuz the breeze is always present on the mount.

CORN ROAST:- Date/Time, Tue. 17th Aug., 1930 till ??? Rain Date one week later 24th Aug.)

How to get there?? It is being held this year at the QTH of Mr. D.J. Heard. Easy to find. Go east on #2 Hwy. to the Solia Rd., which is the second road past the Courtice road. Turn left (north) and proceed about one third to one half mile and watch for the NSRC sign pointing to the QTH. The site is on the west side of the road. Come on out and get your fill of corn and eye-ball QSO's. Bring the family of course!!!!!! C.U. there.

Mac VE3IKG.





Box 171  
OSHAWA

CANADA



VE3CRK  
DAY, Ralph  
454 Holcan Ave.  
OSHAWA, Ontario  
L1G 5X6